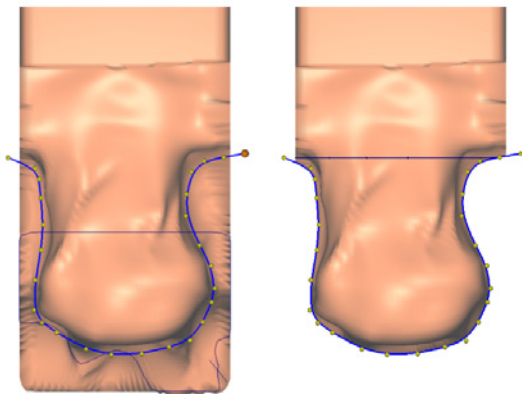


1 Display of the news

When launching Neo, the window will appear one time only per news and per user if the window is closed with the *Close* button. When new information is available, the window will open again. The user can choose to open again the window at next launching by using the *Remind me later* button. This window is accessible from **Online Help** menu, using the *News* button.

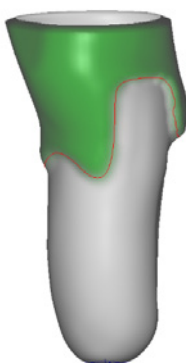
2 Tool Curved Saw

Use this new basic tool for cutting your forms. Go to the online help for more information.



3 Curved Levels

Use the curved level in the **radius tool**: create a radius tool with 3 or 4 levels, place the levels as usually and right click on the levels you wish to convert to curve levels. Go to the online help for more information.



4 Opening Captevia files from “File” menu

In the “File” tab, use the open menu to import Captevia files.

5 Securing the CAM parameters

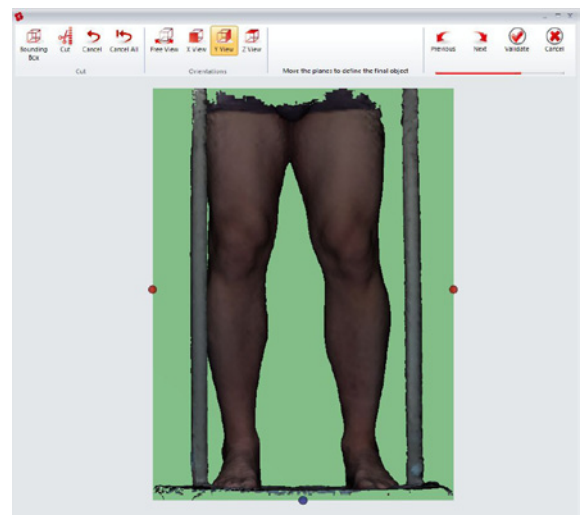
For the CAM licences, in File→CAM, unlock the parameters before editing them.

6 Improvement of decimals management

Setting in (example for mm setting) : options → general → millimeter → default accuracy.

7 Improvement when loading the cleaning scan window

The cleaning scan window can be opened from the patient manager. Select a scan file and click on “Clean scan File”.

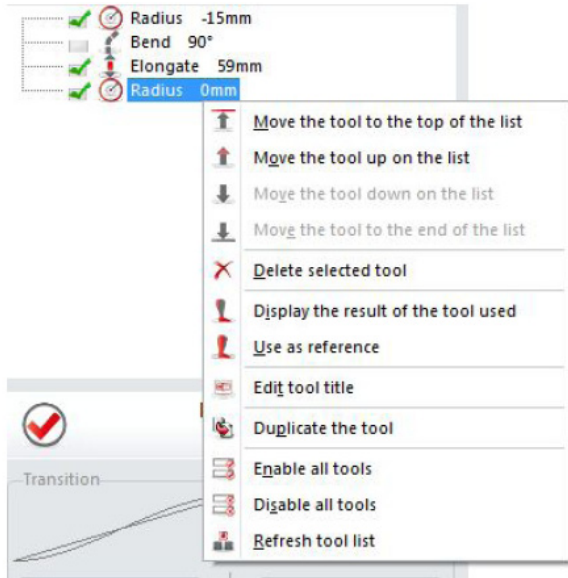


8 Update of measurement “height” when applying tools

To display the general measurements of your form, activate the button “Form” in the “Display” tab.

9 Possibility of duplicating the tools

Right click on the tool in the tools list and click on "Duplicate tool".



10 Possibility of moving landmarks from the inside of the form

Only if option : "option → options → select internal for" is activated.

11 Modification of some default building parameters for curved axis

Modification of AFO and KAFO default parameters.

12 Modification of time limit for calculation of the shape building

Stops calculation if it is too long.

13 Using two parts scans

Scan your patient in two parts and use two inserts to build your form.
Go to the online help for more information.

