

Training Rodin4D

Rodin4D
Parc Le Biogalien
Bâtiment B
27 Allée Charles Darwin
33600 Pessac
France
Tel. +33 (0)5 56 47 77 13
www.rodin4d.com

RODIN





Rodin4D NEO New features and updates

Attendees:

Rodin4D users

Capacity:

Minimum of 3 attendees per session

Location: Rodin4D, Pessac

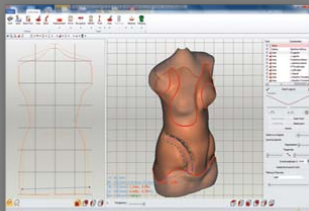
Duration: 1 day

The Rodin4D software is updated on a regular basis and aims to satisfy your needs and facilitate your work.

This course will allow you to discover the new tools and improvements in this new release. You will also be able to implement these new functions through practical exercises.

Training programme:

- Presentation of the new release
- Working with the new tools
- Practical exercises



Getting started with the Rodin4D NEO rectification software

Attendees:

New users

Capacity:

Minimum of 3 attendees per session

Location: Rodin4D, Pessac

Duration: 2 days

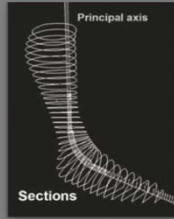
This course will help you acquire the knowledge required to use this software correctly to produce your devices.

Training programme:**Day 1:**

- **Discover the interface:** Launch the software and standard configuration. Discover the 3D, transversal and longitudinal areas. Presentation of menus.
- **Management of patients files:** Create a new patient. Organisation of the patient file. Import photos. Create a new form.
- **Learn how to work with a scanner (1/2)**

Day 2:

- **Learn how to work with a scanner (2/2)**
- **Learn how to work with a library**
- **How to create your own library**
- **Follow a command using Rodin_Com**



Rodin4D NEO Expert training

Attendees:

Experienced users

Capacity:

Minimum of 3 attendees per session

Location: Rodin4D, Pessac

Duration: 2 days

This training allows regular users to improve their software knowledge and as such, reduce rectification and production times.

Training programme:

Day 1:

- Create and/or modify form libraries
- Mastering re-scanning (advanced mode)
- Use and handling of all types of inserts

Day 2:

- In-depth use of complex tools (merge, standard tool...)
- Mastering files imports and exports via Rodin4D
- Perfecting the trim operation



Customised training

Attendees:

Rodin4D users

Capacity:

To be defined with the company

Location: Chosen by the customer

Duration: 1 – 3 days

This course is aimed at companies interested in working on a theme (software, scanners...).

Training programme: To be defined with the company

Examples of customised training courses:

- *Training - Scanners*
- *Training - Milling machines*
- *Training - Rectification of devices: Seat braces, helmets, AFO...*